



800 COMMONWEALTH DRIVE

SAMPSON·MORRIS GROUP

+ **CBRE**



PROPERTY HIGHLIGHTS



**87.895 RSF OVER TWO FLOORS
WITH AN ELEVATOR**



EXTERIOR BUILDING SIGNAGE



ON SITE BACKUP GENERATOR (150KW)



381 PARKING SPACES



**LOADING CAPACITY VIA GRADE LEVEL DOOR WITH DEDICATED
RECEIVING AREA (ABILITY TO EXPAND) 16' CLEAR (CONFIRM)**



**LARGE EAT IN CAFETERIA AND OUTDOOR PATIO
FOR ADDED SEATING**

FLOOR PLANS

FIRST FLOOR:



45 Private Offices



2 Kitchens + Seating



1 Mail Room



12 Conference Rooms



130 Work Stations



Board Room



8 Storage Rooms



Studio Space



FLOOR PLANS

SECOND FLOOR:



35 Private Offices



Kitchen + Seating



10 Conference Rooms



160 Work Stations

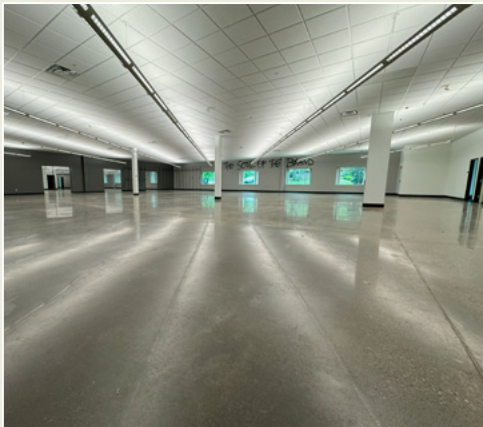
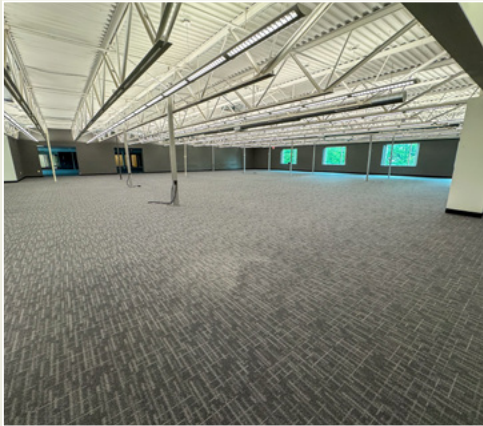


4 Storage Rooms



AERIAL MAP





SAMPSON·MORRIS GROUP + CBRE

THANK YOU

**Jeremy Z.
Kronman, CCIM, SIOR**

Vice Chairman
412 721-6082
jeremy.kronman@cbre.com

**Adam P.
Viccaro, SIOR**

First Vice President
412 600-1535
adam.viccaro@cbre.com

**Alex M.
Ruck**

Vice President
412 726-5514
alex.ruck@cbre.com

**Charlie T.
Must**

Senior Associate
412 394-9806
charlie.must@cbre.com

©2024 CBRE, Inc. All rights reserved. This information has been obtained from sources believed reliable, but has not been verified for accuracy or completeness. You should conduct a careful, independent investigation of the property and verify all information. Any reliance on this information is solely at your own risk. CBRE and the CBRE logo are service marks of CBRE, Inc. All other marks displayed on this document are the property of their respective owners, and the use of such logos does not imply any affiliation with or endorsement of CBRE. Photos herein are the property of their respective owners. Use of these images without the express written consent of the owner is prohibited.