



LANGHOLZ WILSON ELLIS
Commercial Real Estate Services

For Lease

Building 2 - 5302 Triangle Lane Murrysville (Westmoreland Co.), PA



- 187 parking spaces
- New traffic light on recently improved Route 22
- Park-like campus setting
- 6 miles west to PA Turnpike - Monroeville
- 4.3 miles east to PA Rt. 66 and Turnpike connector

For further information, contact:

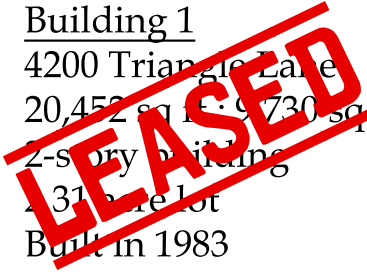
Michael Liguori
(mliguori@LWEre.com)

or

Matthew Virgin
(mvirgin@LWEre.com)

412-261-2200

Building 1
4200 Triangle Lane
20,452 sq ft; 9,730 sq ft available
2-story building
1.37 acre lot
Built in 1983



Building 2
28,860 sq ft
3-story building
Built in 1991

1st Floor (entire) - 9,084 sq ft
2nd Floor (partial) - 4,787 sq ft
3rd Floor (entire) - 9,084 sq ft

606 Liberty Avenue • Suite 300 • Pittsburgh, PA 15222 • Phone: 412-261-2200 • Fax: 412-261-2075



ALL INFORMATION FURNISHED REGARDING PROPERTY FOR SALE, RENTAL OR FINANCING IS FROM SOURCES DEEMED RELIABLE. NO REPRESENTATION IS MADE AS TO THE ACCURACY THEREOF, AND IT IS SUBMITTED SUBJECT TO ERRORS, OMISSIONS, CHANGE OF PRICE, RENTAL, OR OTHER CONDITIONS, PRIOR SALE LEASE, FINANCING OR WITHDRAWAL WITHOUT NOTICE. LANGHOLZ WILSON ELLIS, INC., WILL MAKE NO REPRESENTATION, AND ASSUME NO OBLIGATION, REGARDING THE PRESENCE OR ABSENCE OF TOXIC OR HAZARDOUS WASTE OR SUBSTANCES OR OTHER UNDESIRABLE MATERIAL ON OR ABOUT THE PROPERTY.

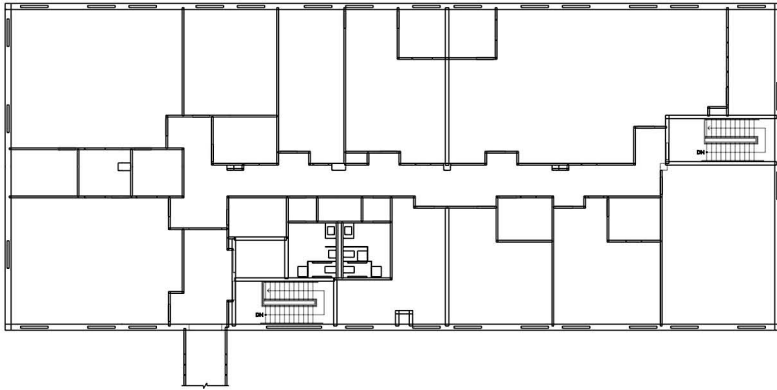




LANGHOLZ WILSON ELLIS
Commercial Real Estate Services

For Lease

Building 2 - 5302 Triangle Lane Murrysville (Westmoreland Co.), PA



Sample
Floor Plan

Site
Plan

