

FOR LEASE > CLASS A FLEX SPACE



Robinson Commerce Center

1000 NAPOR BOULEVARD, PITTSBURGH, PA 15205



Property Information

- > Total Square Footage: 50,000 SF
- > One "Out" Building: 7,370 SF

Site Information

- > +/- 10 Acres - Acreage can be utilized for outside storage or for construction of a +/- 70,000 SF Light Industrial Building
- > Serviced by Pittsburgh and Ohio Central Railroad, connected to the CSX and Norfolk Southern Railroads
- > Zoned Urban Industrial

Building Amenities

- > 25'-10" Clear Ceiling Height
- > 48' x 48' Column Spacing
- > 2,400 Amp 480/277 3 Phase 4 wire

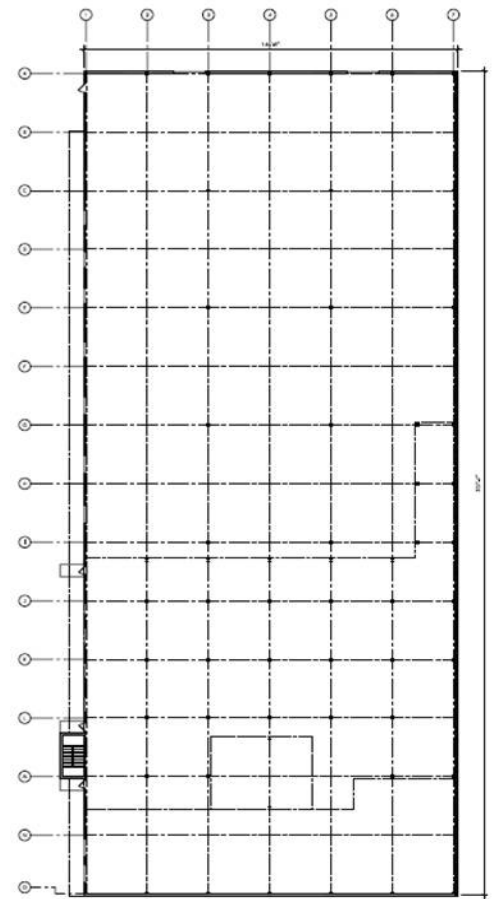
SAMPSON·MORRIS GROUP

Sampson Morris Group is currently in the process of a complete renovation and upgrade of the entire structure, including removal of all non load bearing interior walls, floor leveling, roof replacement, life safety / ADA code compliance and aesthetic upgrades to the building exterior, landscaping and entry drive.

Building > Utilities

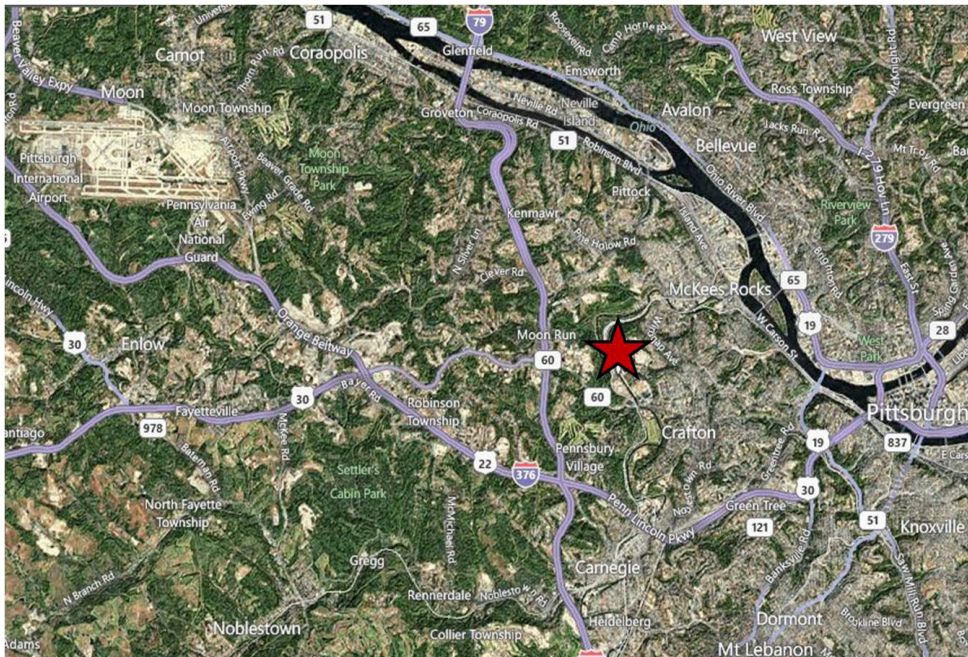
Electric: Duquesne Light
Gas: Equitable
Water: PA American
Sewage: Alcosan

Robinson Commerce Center > Site Plan



FIRST FLOOR PLAN

Property Access > Location



Contact Us

JOHN BILYAK CCIM
PRINCIPAL & DIRECTOR OF INDUSTRIAL
BROKERAGE | PITTSBURGH
412 321 4200 | EXT. 209
john.bilyak@colliers.com

PATRICK SENTNER SIOR
FOUNDING PRINCIPAL | PITTSBURGH
412 321 4200 | EXT. 204
patrick.sentner@colliers.com

COLLIERS INTERNATIONAL | PITTSBURGH
Two NorthShore Center, Suite 330
Pittsburgh, PA 15212
www.colliers.com

The information contained herein has been given to us by the owner of the property or other sources we deem reliable. We have no reason to doubt its accuracy, but we do not guarantee it. All information should be verified prior to purchase or lease.

